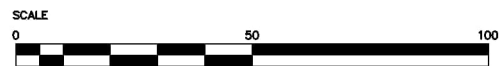
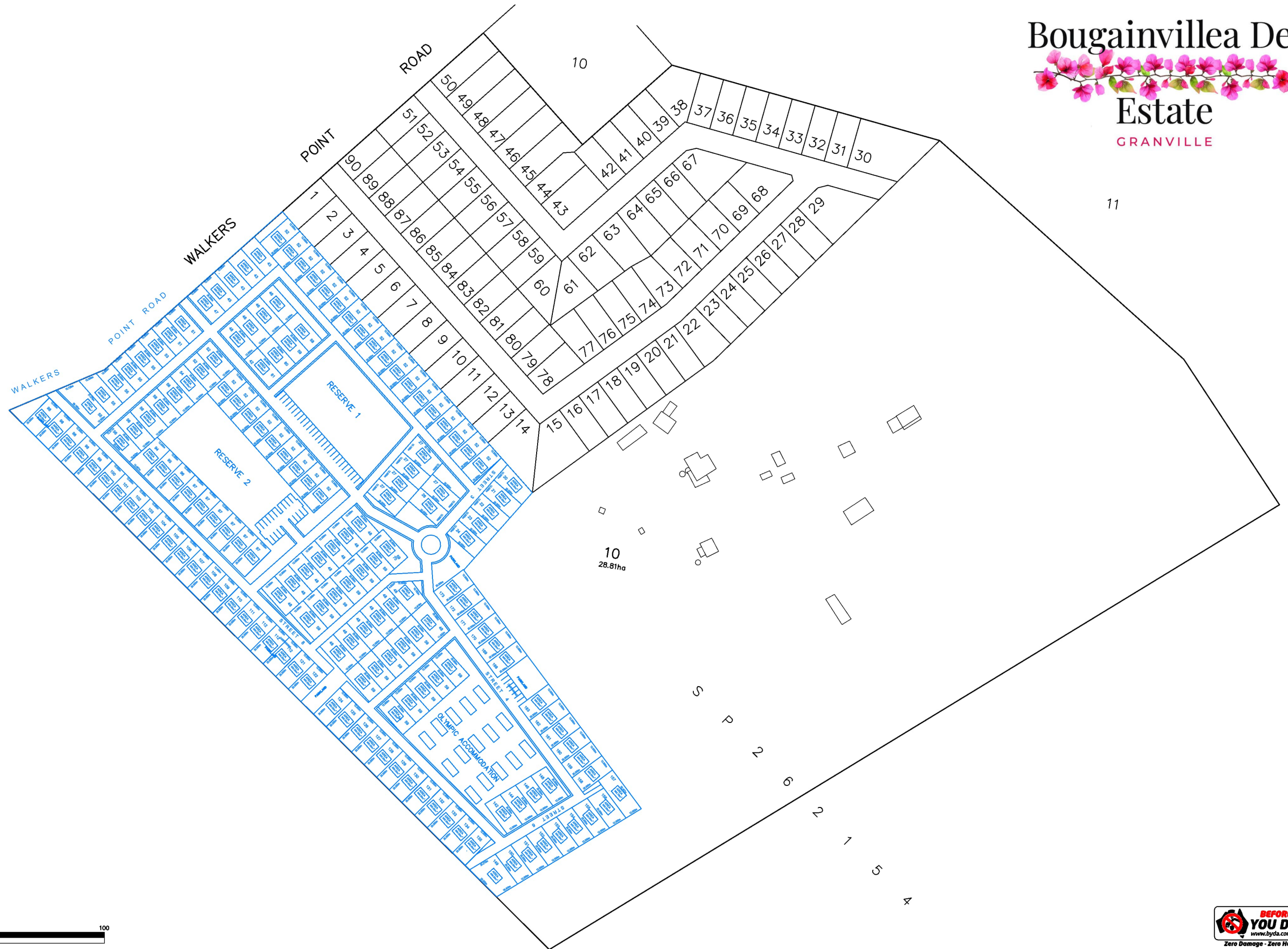


Bougainvillea Del Estate

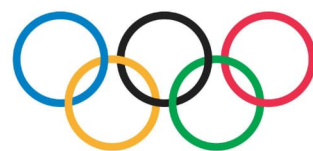
GRANVILLE



Liability limited by a scheme approved under Professional Standards Legislation

SCALE 1:1,250 @ A1 1:2500 @ A3	WARNING NOTE: THE INFORMATION SHOWN ON THIS PLAN (OR THE DATA TRANSMITTED HEREWITH) IS CORRECT AS AT 16/07/2025 AND HAS BEEN PREPARED IN ACCORDANCE WITH THE REQUIREMENTS OF MR. J MOLNAR.
DATUM	THESE WARNING NOTES MUST NOT BE REMOVED FROM THIS ELECTRONIC FILE. IF THESE NOTES ARE REMOVED SET CONSULTANTS PTY LTD IS RELIEVED OF ALL RESPONSIBILITY AND LIABILITY RELATING TO ANY SUBSEQUENT USE OF THE INFORMATION CONTAINED WITHIN THIS FILE.
	THIS ELECTRONIC FILE SHALL NOT BE TRANSMITTED TO ANY THIRD PARTY WITHOUT THE EXPRESS PERMISSION OF SET CONSULTANTS PTY LTD.

SURVEY	N/A	AMENDMENTS	BY	DATE
DESIGN	SET	A - ORIGINAL ISSUE	SET	16 JUL 2025
DRAWN	LC			
CHECKED	DC			
APPROVED				



SET CONSULTANTS PTY LTD
51 Graham Street Nowra
PO Box 495 Nowra NSW 2541
p 02 4421 4500
Kiama 02 4233 2006
mail@setconsultants.com.au
www.setconsultants.com.au
ABN 47 561 956 577

SITE ANALYSIS/CONTEXT PLAN FOR PROPOSED SUBDIVISION OVER LOT 10 SP262154 94 WALKERS POINT ROAD, GRANVILLE FOR MR J MOLNAR	
---	--

A1	1	OF	1	SHEETS
REF. No.	24964			

Z:\Energy Projects\25022626\Town\24964 - Proposed Subdivision.v2